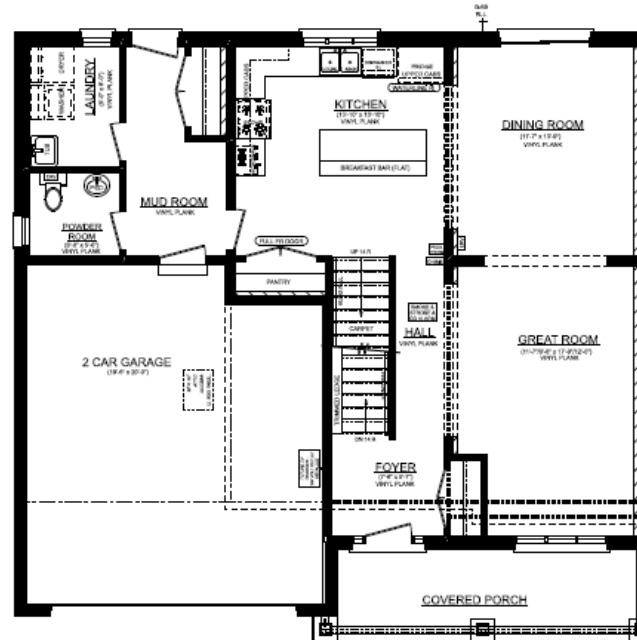
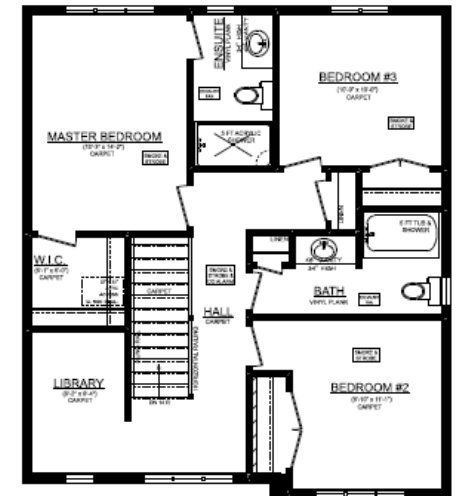


BRIARWOOD 'C'
BASEMENT PLAN



BRIARWOOD 'C'
MAINFLOOR PLAN
1046 SQ. FT.
8' CEILINGS ON MAINFLOOR



BRIARWOOD 'C'
2ND FLOOR PLAN
846 SQ. FT.
(DOES NOT INCLUDE 45 SQ.FT. OPEN TO BELOW)
8' CEILINGS ON 2ND FLOOR