

# THE GLENWOOD

*Quick possession home*



2 BEDROOM



2.5 BATH



1,276ft<sup>2</sup>



\$713,390



DREW CASPI

519-207-3066

[dcaspi@dougarryhomes.com](mailto:dcaspi@dougarryhomes.com)



**10 Silverleaf Path, St. Thomas  
Lot 3, Miller's Pond**

This plan is property of Doug Tarry Homes. Renderings are artist's concept. Prices, specifications, plans and information are subject to change without notice. See sales representatives for more information. E.O.E.

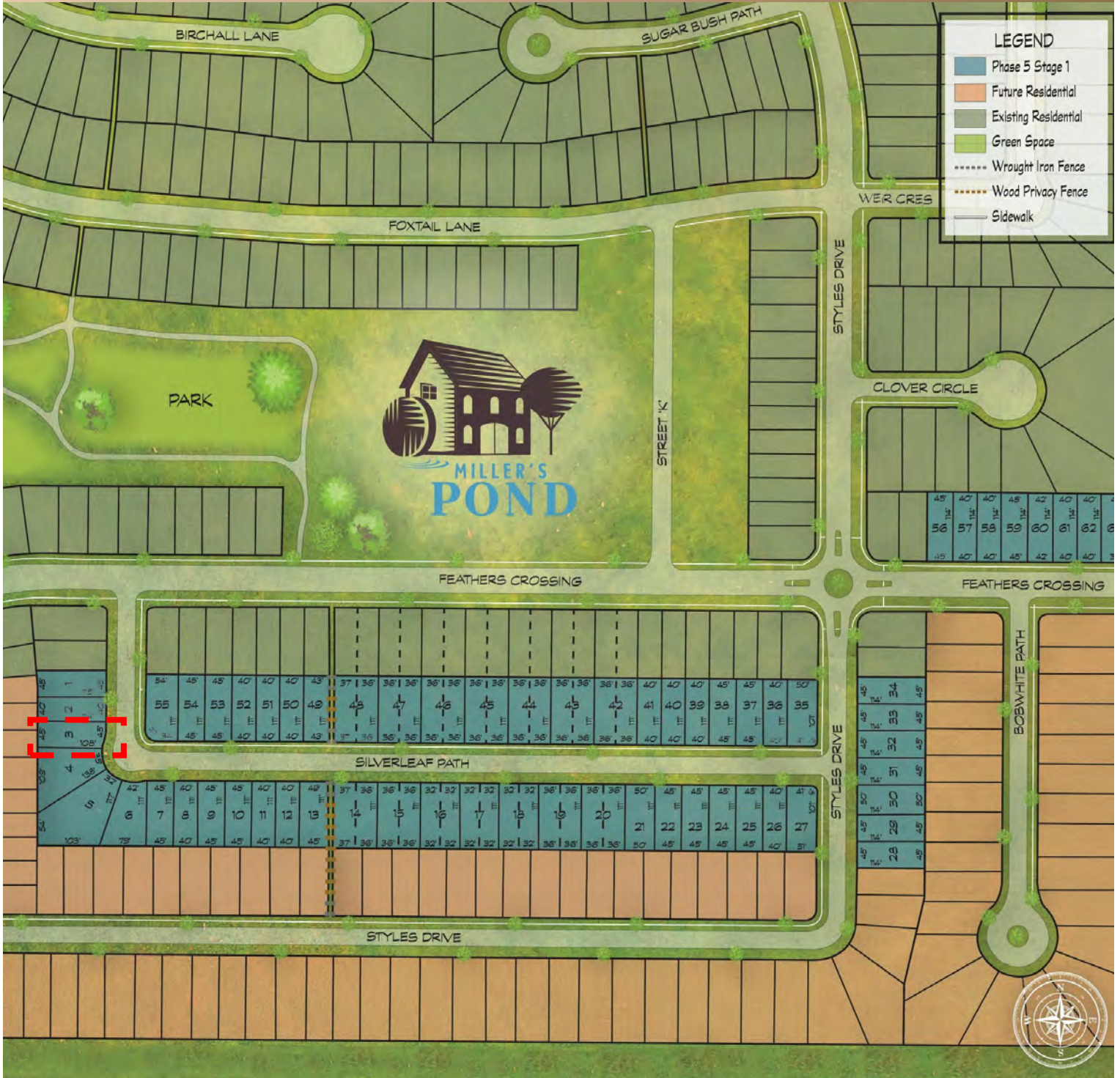




# THE GLENWOOD



10 Silverleaf Path  
Lot 3, Miller's Pond



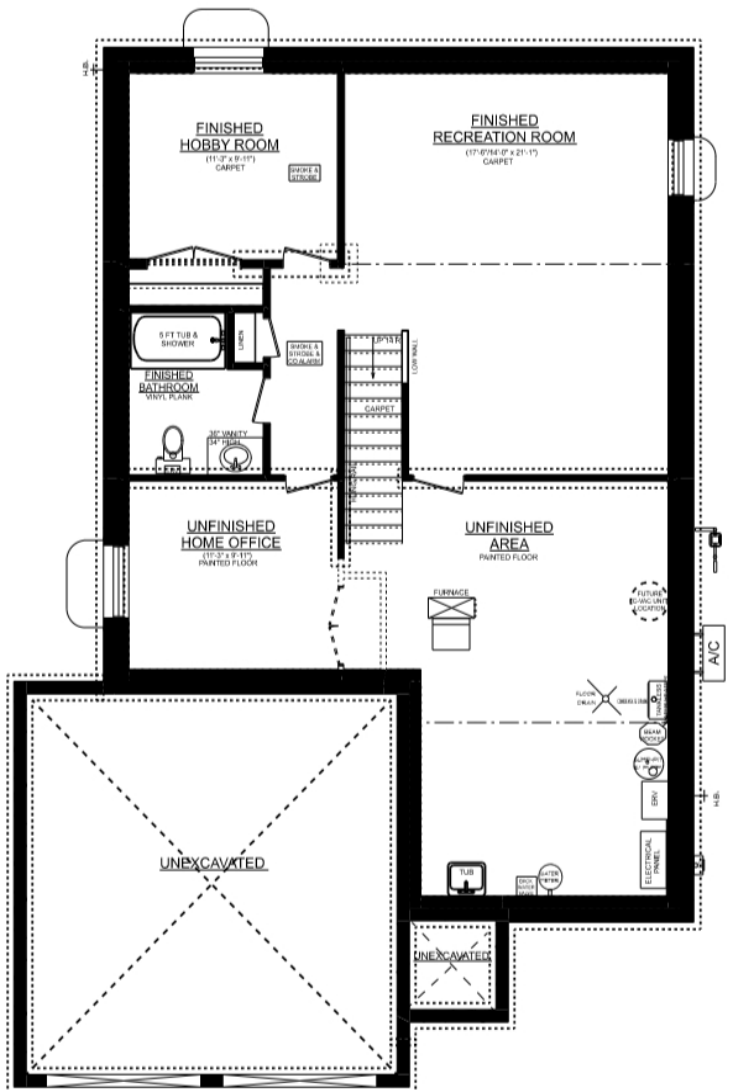
This plan is property of Doug Tarry Homes. Renderings are artist's concept. Prices, specifications, plans and information are subject to change without notice. See sales representatives for more information. E.O.E.



# THE GLENWOOD

10 Silverleaf Path  
Lot 3, Miller's Pond

## BASEMENT PLAN



### UPGRADES INCLUDE:

- Finished Basement
- 2 Car Garage
- Added Egress Window
- Widened Garage Entry
- 72"x 36" Kitchen Island with Quartz
- Upgraded Cabinetry
- Frosted Pantry Door
- Upgraded Ensuite Shower

This plan is property of Doug Tarry Homes. Renderings are artist's concept. Prices, specifications, plans and information are subject to change without notice. See sales representatives for more information. E.O.E.

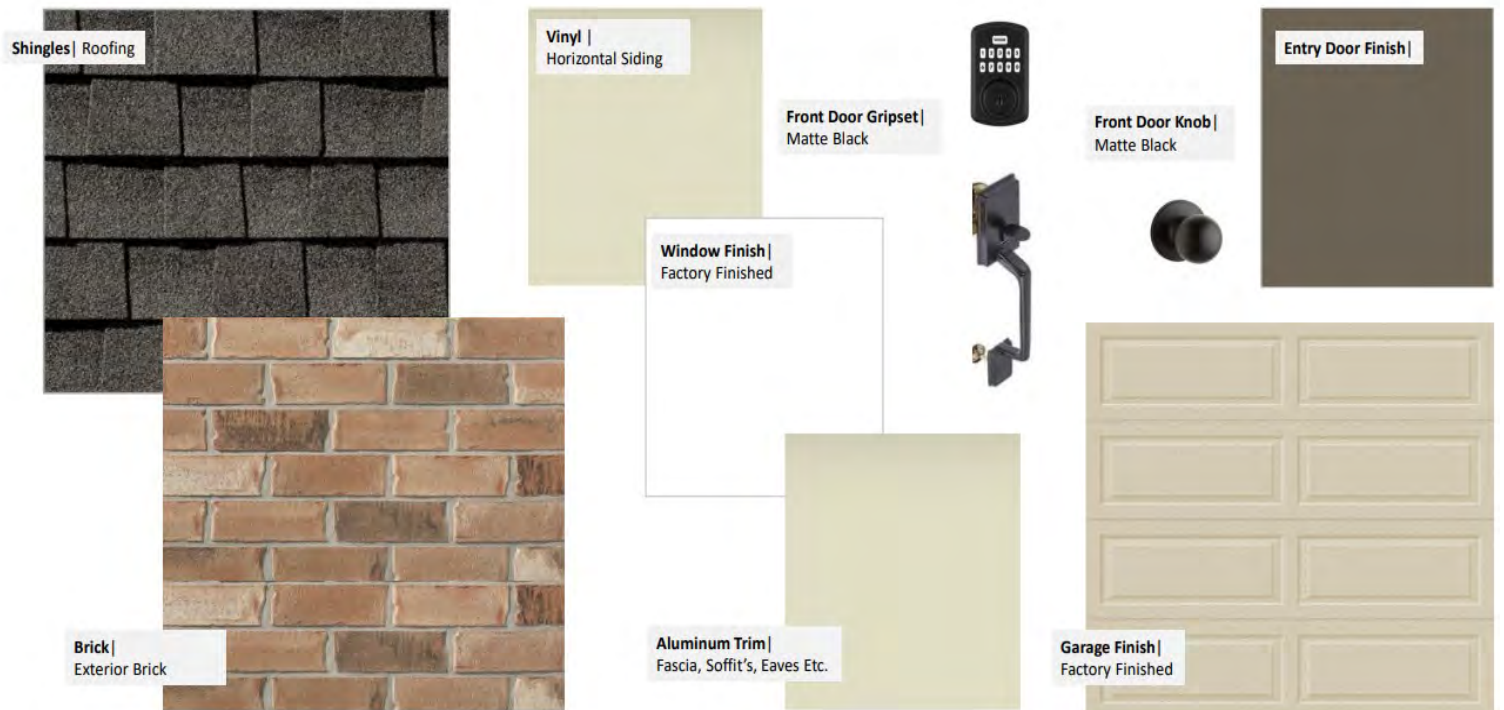






# EXTERIOR PACKAGE

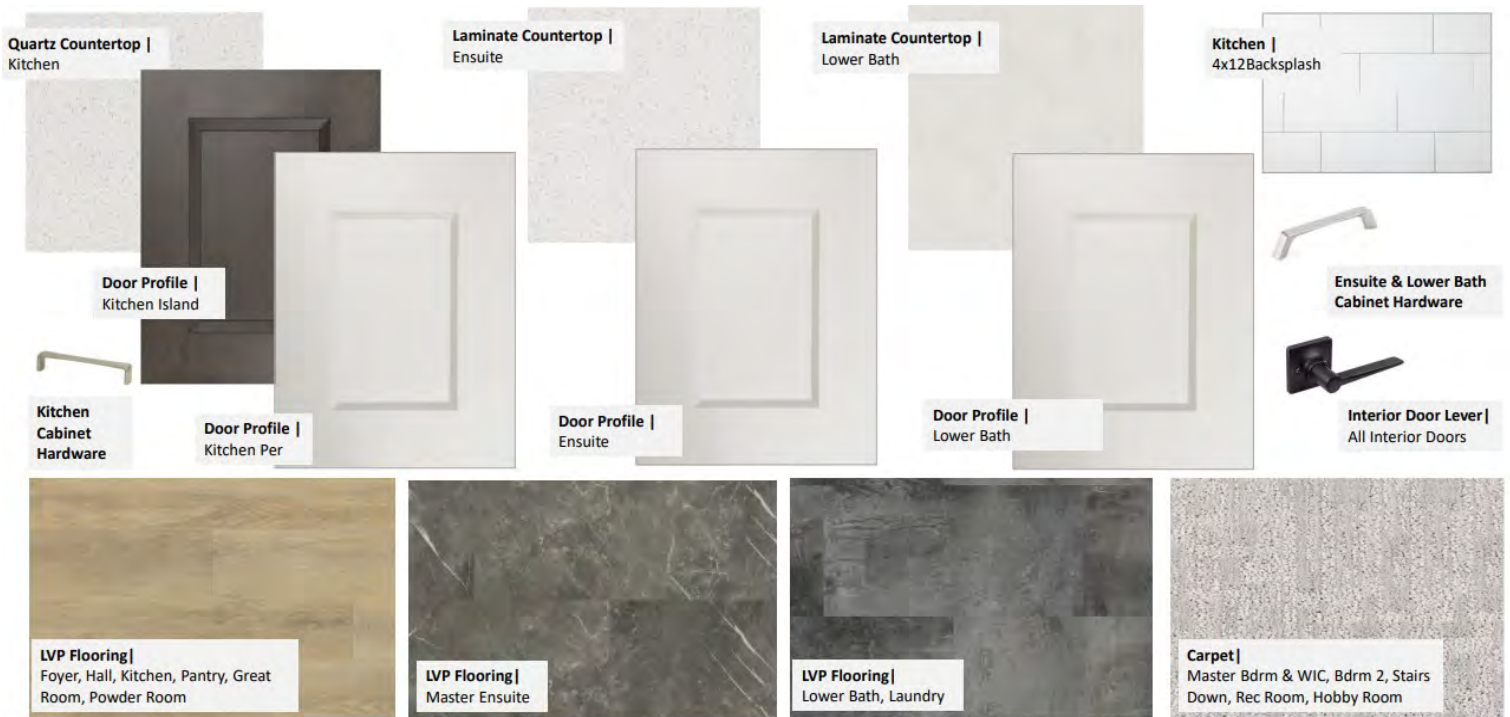
10 Silverleaf Path  
Lot 3, Miller's Pond



Colours and patterns may slightly vary from physical materials.  
The images shown are only intended as a representation of selections chosen. E.&OE.

# INTERIOR PACKAGE

10 Silverleaf Path  
Lot 3, Miller's Pond



Colours and patterns may slightly vary from physical materials.

The images shown are only intended as a representation of selections chosen. E.&OE.