

# THE ASHTON B

*Quick possession home*



3 BEDROOM



2.5 BATH



1,600 ft<sup>2</sup>



\$549,900 INTERIOR UNIT



Jackie DaSilva

519-207-6222

[jdasilva@dougarryhomes.com](mailto:jdasilva@dougarryhomes.com)



95 Empire Parkway, St. Thomas  
Lot 13, Harvest Run

This plan is property of Doug Tarry Homes. Renderings are artist's concept. Prices, specifications, plans and information are subject to change without notice. See sales representatives for more information. E.O.E.





# THE ASHTON B



95 Empire Parkway  
Lot 13, Harvest Run



Site plan is artist's concept. Lot dimensions are approximate and depend on final survey. Landscape areas and plantings are concepts only and may vary from finished landscape. See sales representative for more information. E. & O. E.

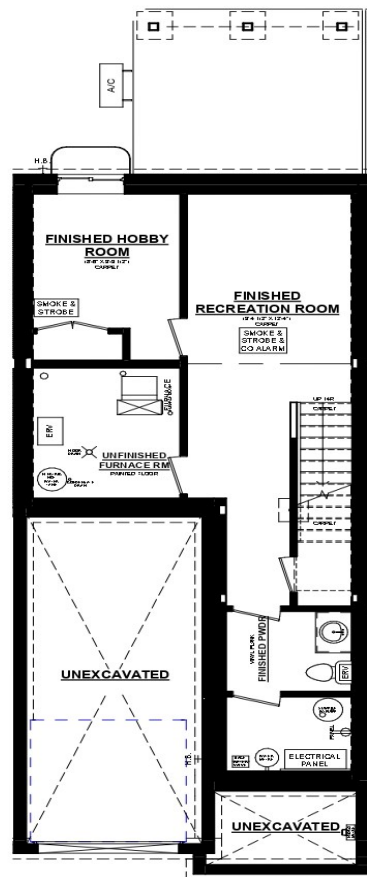
This plan is property of Doug Tarry Homes. Renderings are artist's concept. Prices, specifications, plans and information are subject to change without notice. See sales representatives for more information. E.O.E.



# THE ASHTON B

95 Empire Parkway  
Lot 13, Harvest Run

## BASEMENT PLAN



Ashton B UNIT #2  
BASEMENT PLAN  
378 SQ. FT. FINISHED BASEMENT SPACE

### UPGRADES INCLUDE:

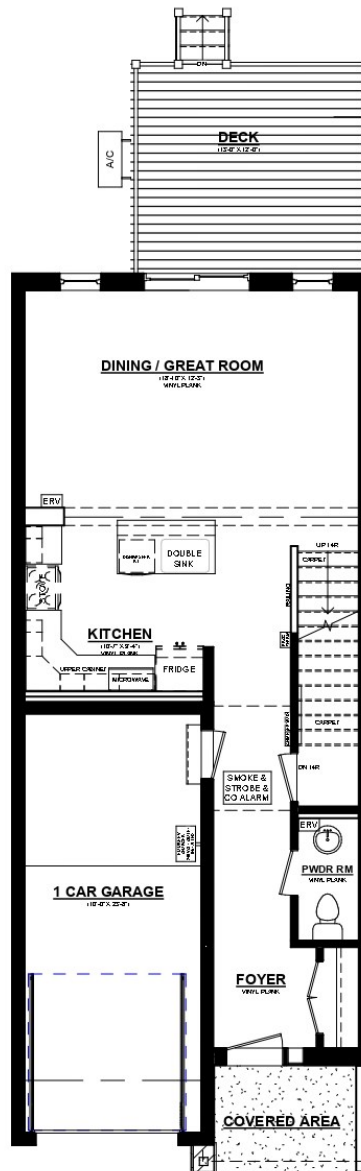
- Quartz Countertop in Kitchen
- Kitchen backsplash
- Luxury Vinyl Plank Flooring
- Fridge, Stove & Dishwasher
- Finished Basement
- Pressure Treated wood Deck
- Backs onto Green Space



# THE ASHTON B

95 Empire Parkway  
Lot 13, Harvest Run

## ASHTON 'B' LOT #13 EMPIRE PARKWAY UNIT # 2



Ashton B UNIT #2  
MAINFLOOR PLAN

690 SQ. FT.

8' CEILINGS ON MAINFLOOR\* CEILINGS ON MAINFLOOR

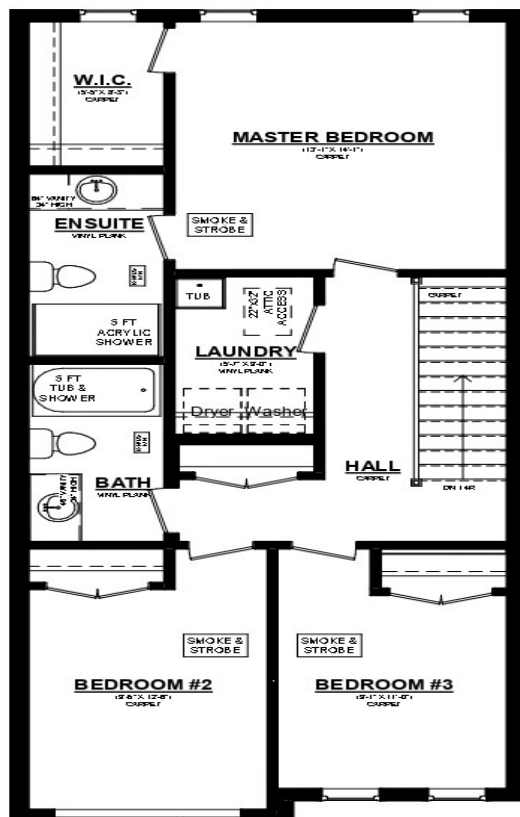
### UPGRADES INCLUDE:

- Quartz Countertops in Kitchen
- Kitchen backsplash
- Luxury Vinyl Plank Flooring
- Fridge, Stove & Dishwasher
- Finished Basement
- Pressure Treated Wood Deck
- Backs onto Green Space

# THE ASHTON B

95 Empire Parkway  
Lot 13, Harvest Run

## 2ND FLOOR PLAN



**Ashton B UNIT #2**  
**2ND FLOOR PLAN PLAN**  
910 SQ. FT.

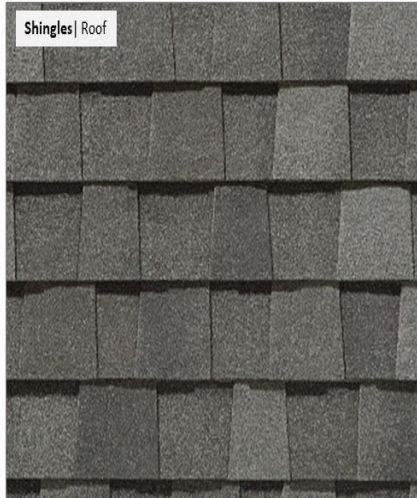
8' CEILINGS ON 2ND FLOOR' CEILINGS ON 2ND FLOOR PLAN

### UPGRADES INCLUDE:

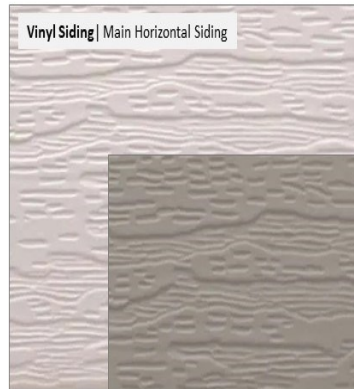
- Quartz Countertops in Kitchen
- Kitchen backsplash
- Luxury Vinyl Plank Flooring
- Fridge, Stove & Dishwasher
- Finished Basement
- Pressure Treated Wood Deck
- Backs onto Green Space

# EXTERIOR PACKAGE

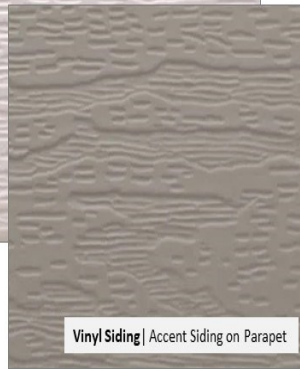
95 Empire Parkway  
Lot 13, Harvest Run



Shingles | Roof



Vinyl Siding | Main Horizontal Siding



Vinyl Siding | Accent Siding on Parapet



Aluminum Trim |  
Soffits, Facia, Eaves, Frieze board & Trim



Windows | Exterior Finish



Front Door | Finish

Front Door | Gripset

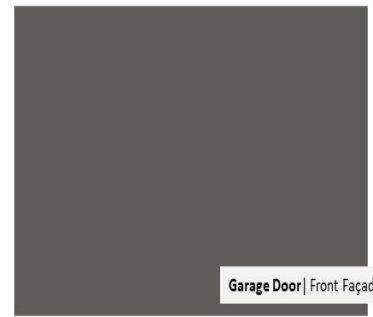
Front Door | Style



Brick | Main Level Facade



Stone | Stone Façade & Stone Column Bases



Garage Door | Front Façade

Colours and patterns may slightly vary from physical materials. The images shown are only intended as a representation of selections chosen. E.O.E.



ASHTON TOWNHOUSES  
EXTERIOR FINISH PACKAGE 2



Colours and patterns may slightly vary from physical materials.  
The images shown are only intended as a representation of selections chosen. E.&OE.

This plan is property of Doug Tarry Homes. Renderings are artist's concept. Prices, specifications, plans and information are subject to change without notice. See sales representatives for more information. E.O.E.



# INTERIOR PACKAGE

95 Empire Parkway  
Lot 13, Harvest Run



Colours and patterns may slightly vary from physical materials. The images shown are only intended as a representation of selections chosen. E&OE.



ASHTON TOWNHOUSES  
INTERIOR FINISH PACKAGE 2



Colours and patterns may slightly vary from physical materials.  
The images shown are only intended as a representation of selections chosen. E.&OE.

This plan is property of Doug Tarry Homes. Renderings are artist's concept. Prices, specifications, plans and information are subject to change without notice. See sales representatives for more information. E.O.E.

