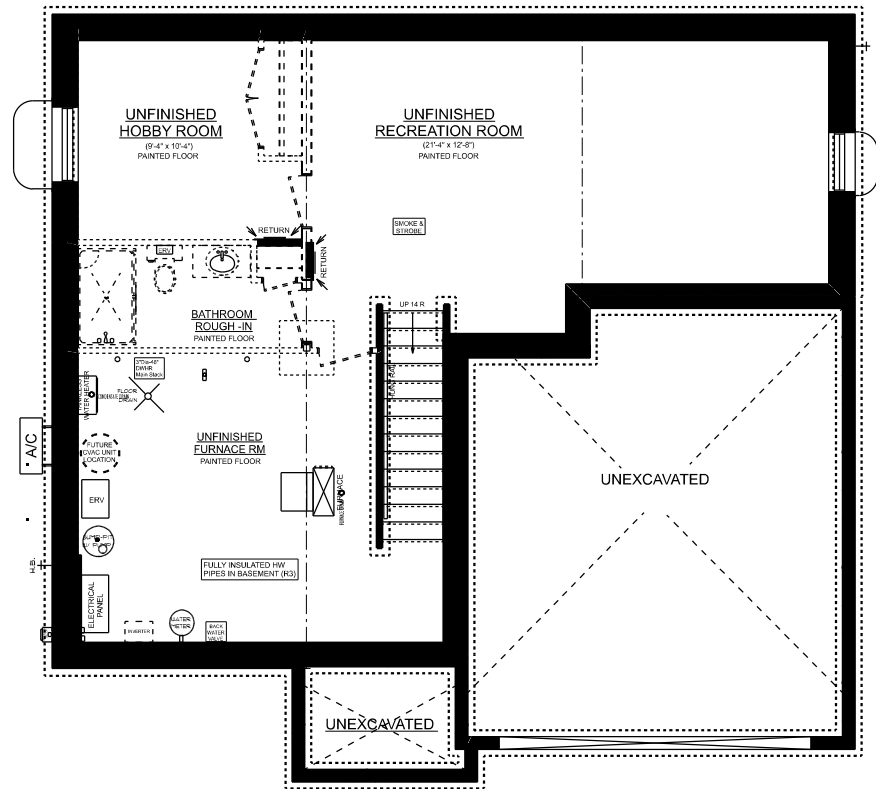
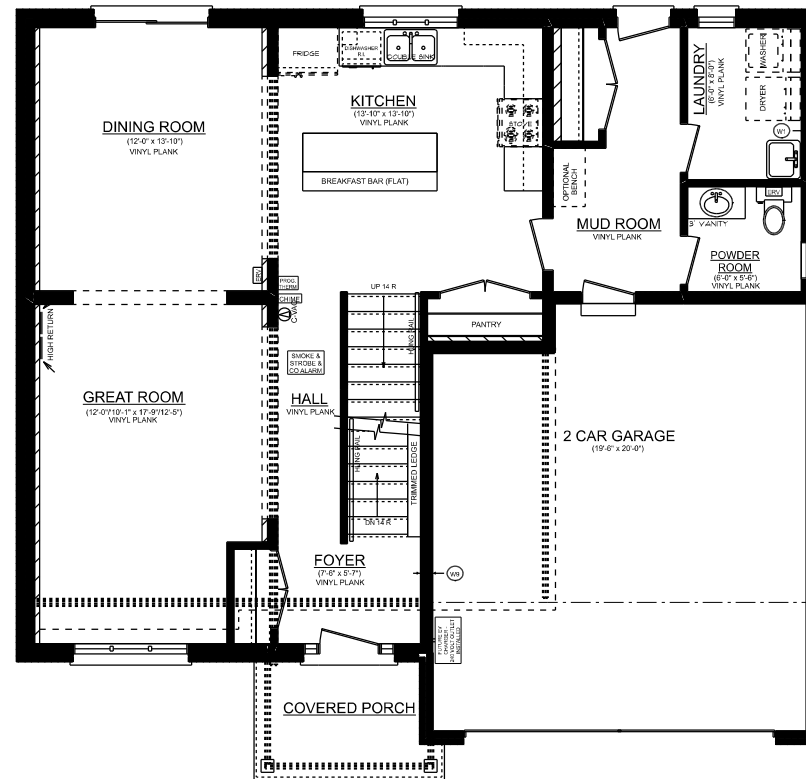


THE BRIARWOOD

1892 SQ. FT.

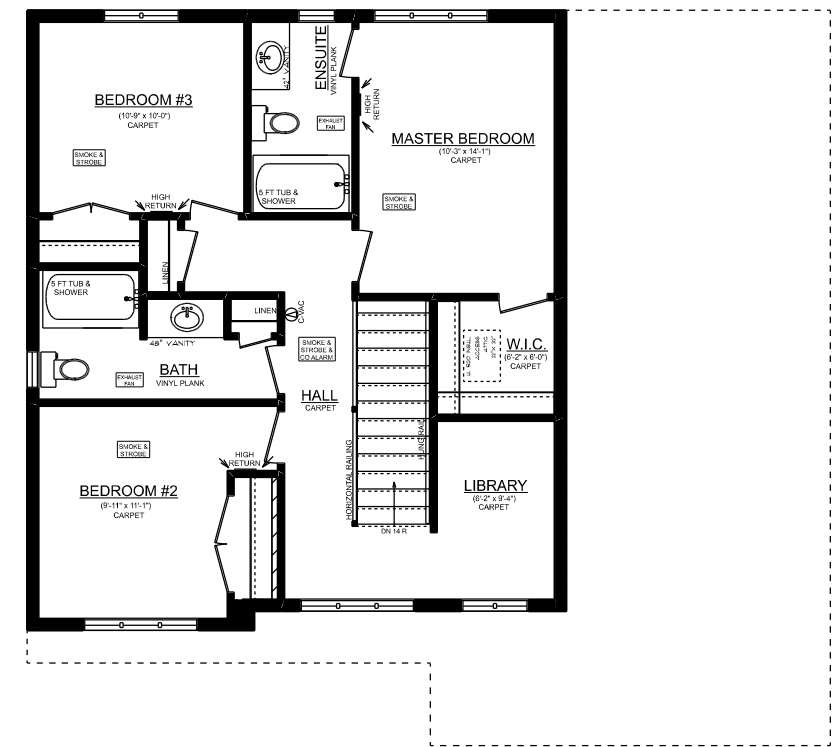


BRIARWOOD 'A'
BASEMENT PLAN



BRIARWOOD 'A'
MAINFLOOR PLAN

1046 SQ. FT.
8' CEILINGS ON MAINFLOOR
PRELIMINARY PLAN/NOT FOR CONSTRUCTION



BRIARWOOD 'A'
2ND FLOOR PLAN

846 SQ. FT.
(DOES NOT INCLUDE 45 SQ.FT. OPEN TO BELOW)
8' CEILINGS ON 2ND FLOOR

TO VIEW ADDITIONAL FLOOR PLAN OPTIONS
VISIT OUR WEBSITE AT (www.dougarryhomes.com)