

# THE MAPLERIDGE

1668 SQUARE FEET



ELEVATION 'C'

# THE MAPLERIDGE

1668 SQUARE FEET



ELEVATION 'A'

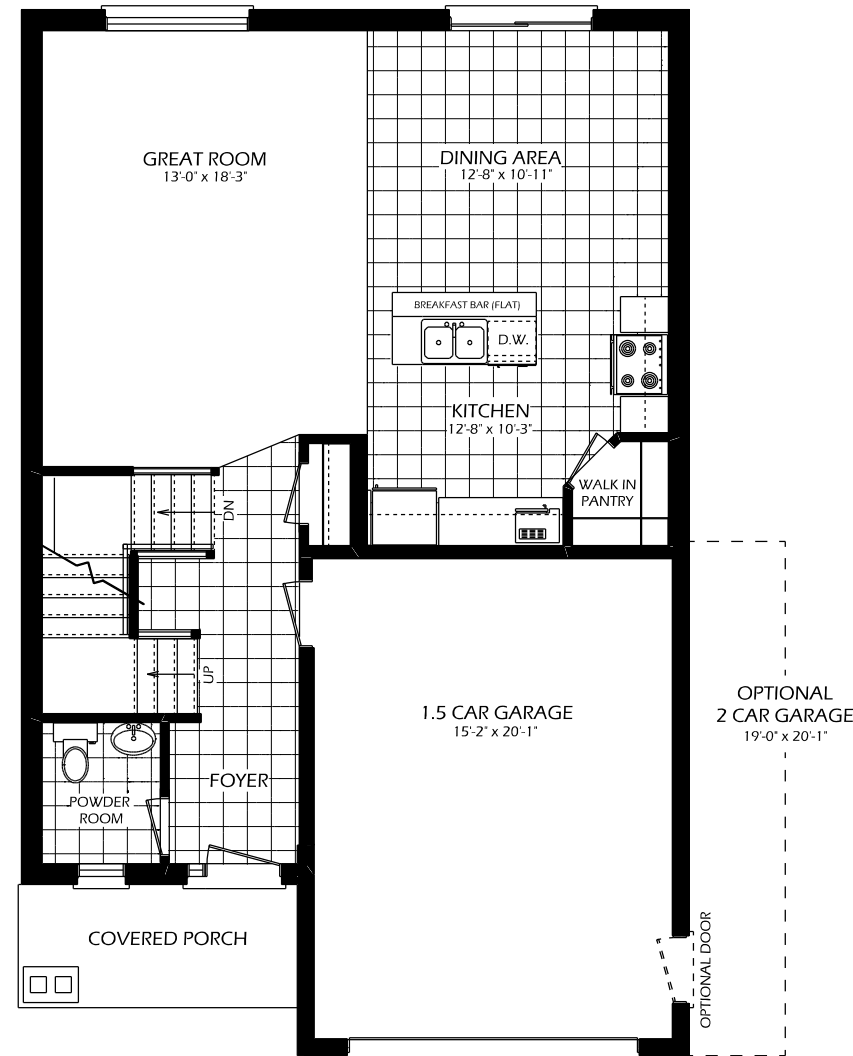
Elevations and floorplans are conceptual representations only. Sizes and specifications are subject to change without notice. E & O.E. See sales representatives for details. Refer to price sheet for elevation pricing.

OCT 5 2021

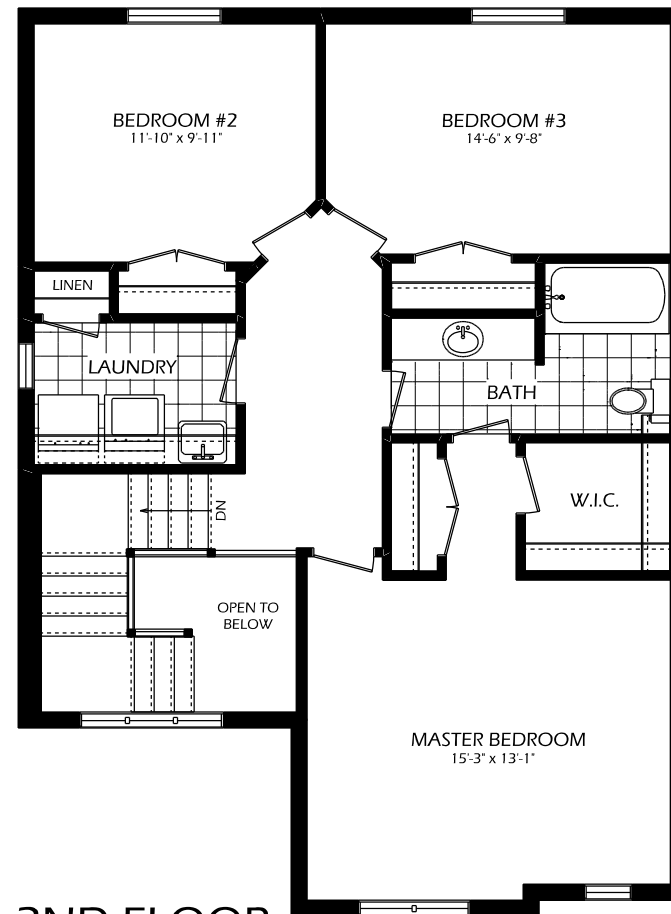


# THE MAPLERIDGE

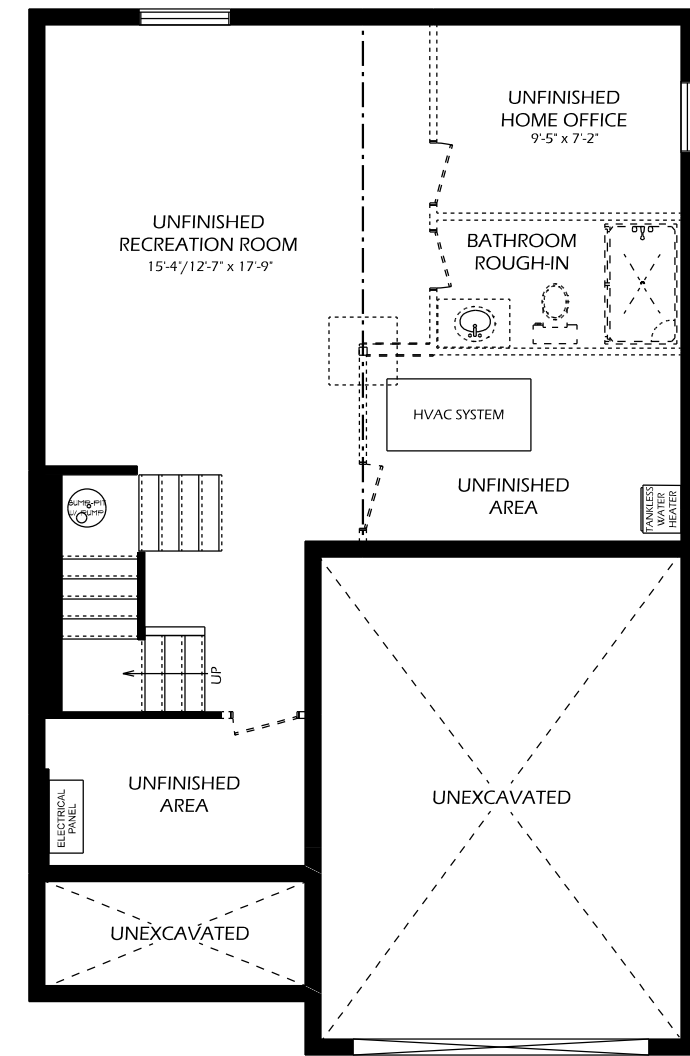
1668 SQ. FT.



**MAIN FLOOR**  
797 SQ. FT.  
8' CEILINGS (MAIN FLOOR)



**2ND FLOOR**  
871 SQ. FT.  
DOES NOT INCLUDE 95 SQ. FT. OPEN TO BELOW



**BASEMENT**

TO VIEW ADDITIONAL FLOOR PLAN OPTIONS  
VISIT OUR WEBSITE AT ([www.dougarryhomes.com](http://www.dougarryhomes.com))