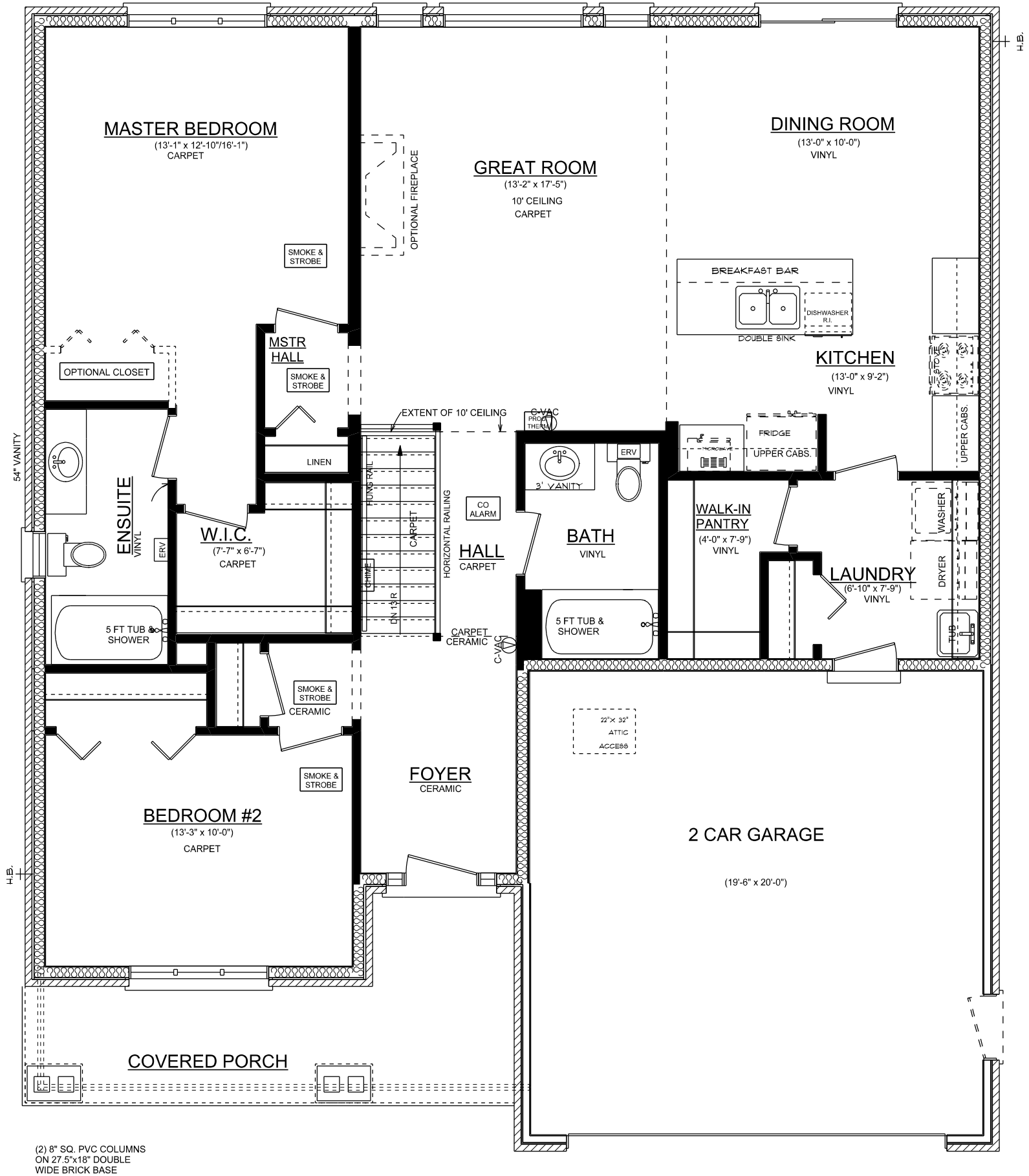
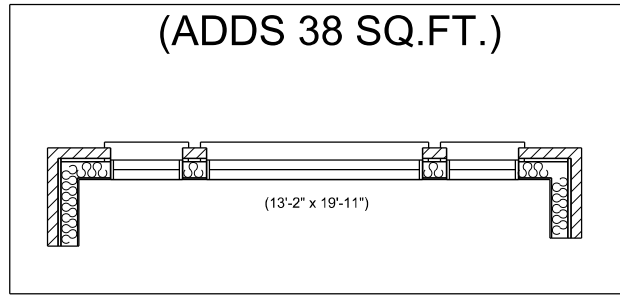


**OPT EXTENDED GREAT ROOM
(ADDS 38 SQ.FT.)**



(2) 8" SQ. PVC COLUMNS
ON 27.5"x18" DOUBLE
WIDE BRICK BASE

**THORNWOOD 'A'
MAINFLOOR PLAN (OPT. OPEN CONCEPT KITCHEN)**

1460 SQ. FT.

(1498 SQ. FT. w OPT EXTENDED GREAT ROOM)

8' CEILINGS ON MAINFLOOR

PRELIMINARY PLAN/NOT FOR CONSTRUCTION